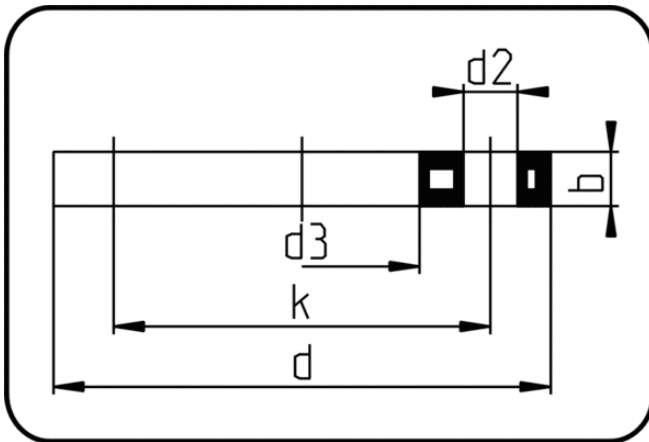


Backing Rings, Accessories



Code: 017

- Backing Ring DIN
- steel insert/for FRP
- injection moulded+drilled PN10
- Flange connection
- PP-FRP black

Dimension	Code	Detail	da(OD) mm	d mm	d2 mm	d3 mm	b mm	k mm	Weight
20	14.017.0020.11	20 - MOP 16 bar	20	95	14	34	12	65	0.24
25	14.017.0025.11	25 - MOP 16 bar	25	108	14	40	14	75	0.31
32	14.017.0032.11	32 - MOP 16 bar	32	115	14	50,5	16	85	0.39
40	14.017.0040.11	40 - MOP 16 bar	40	140	18	60	18	100	0.59
50	14.017.0050.11	50 - MOP 16 bar	50	150	18	68,5	18	110	0.67
63	14.017.0063.11	63 - MOP 16 bar	63	165	18	82,5	18	125	0.75
75	14.017.0075.11	75 - MOP 16 bar	75	186	18	95,5	18	145	1.10
90	14.017.0090.11	90 - MOP 16 bar	90	202	18	111,5	20	160	1.18
140	14.017.0140.11	140 - MOP 16 bar	140	250	18	160,5	24	210	1.93
315	14.017.0315.11	315 - MOP 16 bar	315	463	23	344	34	400	9.76
355	14.017.0355.11	355 - MOP 16 bar	355	515	22,5	388	42	460	13.60
400	14.017.0400.11	400 - MOP 16 bar	400	574	26	442	46	515	16.50
500	14.017.0500.11	500 - MOP 10 bar	500	678	26	545	45	620	22.30
630	14.017.0630.11	630 - MOP 10 bar	630	789	30	650	50	725	31.30