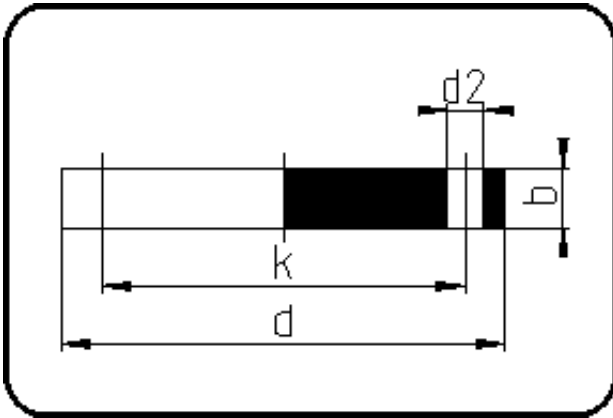


## Backing Rings, Accessories



Code: 12.334

- Blind Flange no steel insert
- DIN/pressureless applications
- machined/drilled PN10
- **Flange connection**
- PPH grey

Dimension	Code	Detail	Weight
900	12.334.0900.00	900	53.00

	Unit	Nominale	Tol+	Tol-
da(OD)	mm	900	0.00	0.00
b	mm	60	0.75	0.75
DN	mm	900	0.00	0.00
numb	pc	28	0.00	0.00
d	mm	1.115	1.50	1.50
d2	mm	33	0.75	0.75
K	mm	M30	0.00	0.00
k	mm	1.050	0.75	0.75