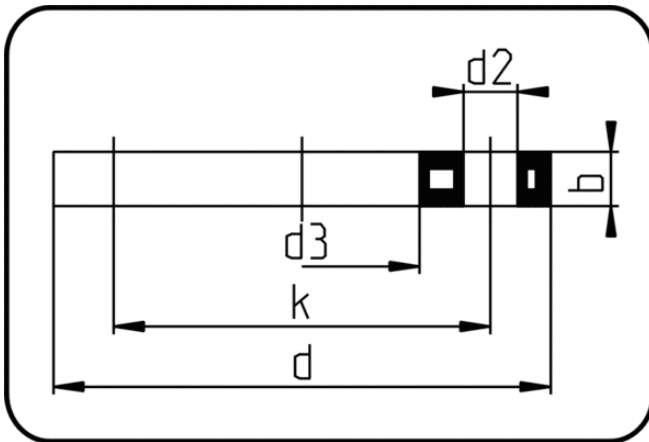


Backing Rings, Accessories



Code: 11.014

- Backing Ring DIN
- steel insert/for stub flange
- inj. moulded+drilled PN10/16
- Flange connection
- PP-FRP grey

The torques nm[NM] specified in the technical catalogue are to be used as maximum values.

| Dimension | Code | Detail | da(OD) mm | d mm | d2 mm | d3 mm | b mm | k mm | Weight |
|-----------|----------------|------------------|--------------|---------|----------|----------|---------|---------|--------|
| 20 | 11.014.0020.11 | 20 - MOP 16 bar | 20 | 95 | 14 | 28 | 12 | 65 | 0.22 |
| 25 | 11.014.0025.11 | 25 - MOP 16 bar | 25 | 108 | 14 | 34 | 14 | 75 | 0.29 |
| 32 | 11.014.0032.11 | 32 - MOP 16 bar | 32 | 115 | 14 | 42 | 16 | 85 | 0.36 |
| 40 | 11.014.0040.11 | 40 - MOP 16 bar | 40 | 140 | 18 | 51 | 18 | 100 | 0.60 |
| 50 | 11.014.0050.11 | 50 - MOP 16 bar | 50 | 150 | 18 | 62 | 18 | 110 | 0.72 |
| 63 | 11.014.0063.11 | 63 - MOP 16 bar | 63 | 165 | 18 | 78 | 18 | 125 | 0.77 |
| 75 | 11.014.0075.11 | 75 - MOP 16 bar | 75 | 186 | 18 | 92 | 18 | 145 | 1.10 |
| 90 | 11.014.0090.11 | 90 - MOP 16 bar | 90 | 202 | 18 | 108 | 20 | 160 | 1.19 |
| 110 | 11.014.0110.11 | 110 - MOP 16 bar | 110 | 220 | 18 | 128 | 20 | 180 | 1.36 |
| 125 | 11.014.0125.11 | 125 - MOP 16 bar | 125 | 220 | 18 | 135 | 20 | 180 | 1.24 |
| 140 | 11.014.0140.11 | 140 - MOP 16 bar | 140 | 250 | 18 | 158 | 24 | 210 | 1.98 |
| 160 | 11.014.0160.11 | 160 - MOP 16 bar | 160 | 285 | 22 | 178 | 23 | 240 | 2.64 |
| 180 | 11.014.0180.11 | 180 - MOP 16 bar | 180 | 285 | 22 | 190 | 23 | 240 | 2.24 |