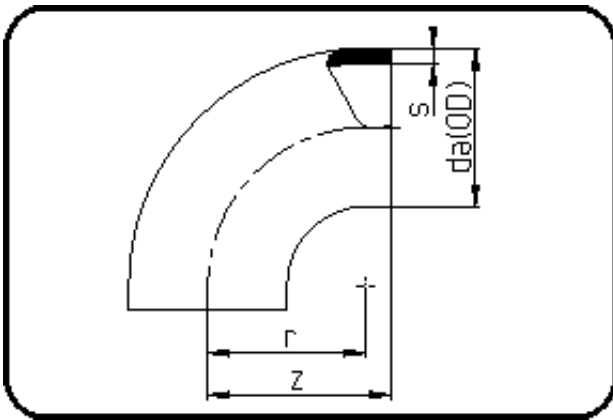


## Fittings with short Spigot



Code: 001

- Bend 90°
- short spigot
- injection moulded
- **Butt-welding**
- PPR grey

Dimension	Code	Detail	Weight
180	11.001.0180.17	180X10,7 SDR17 ISO S-8	1.76

	Unit	Nominale	Tol+	Tol-
da(OD)	mm	180	1.70	0.00
r	mm	180	0.00	0.00
s	mm	10,7	1.20	0.00
z	mm	200	4.50	4.50