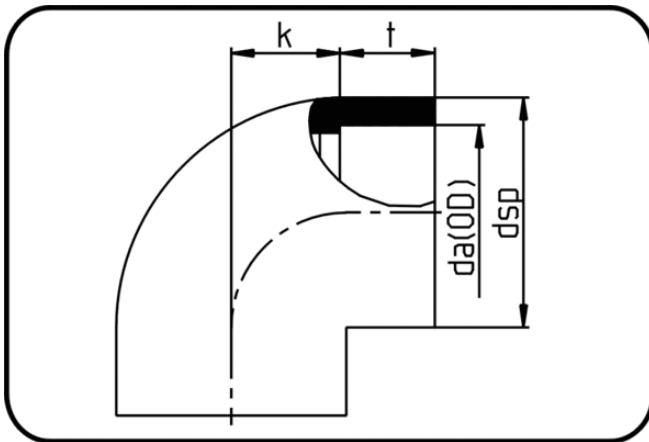


Fittings for Socket Welding



Code: 051

- Elbow 90°
- injection moulded
- Socket-welding
- PPR grey

Dimension	Code	Detail	da(OD) mm	dsp mm	t mm	k mm	p bar	Weight
20	11.051.0020.07	20 - MOP 20 bar	20	29,3	16	14	10	0.02
25	11.051.0025.07	25 - MOP 20 bar	25	35,1	18	17	10	0.03
32	11.051.0032.07	32 - MOP 20 bar	32	43,2	19,5	20	10	0.05
40	11.051.0040.07	40 - MOP 20 bar	40	53,3	21,5	25	10	0.08
50	11.051.0050.07	50 - MOP 20 bar	50	65	25	28	10	0.14
63	11.051.0063.07	63 - MOP 20 bar	63	81,5	30,5	35	10	0.25
75	11.051.0075.07	75 - MOP 16 bar	75	93	32	39	10	0.29
90	11.051.0090.07	90 - MOP 16 bar	90	111	36,5	46	10	0.47
110	11.051.0110.07	110 - MOP 10 bar	110	134	43	57	10	0.79