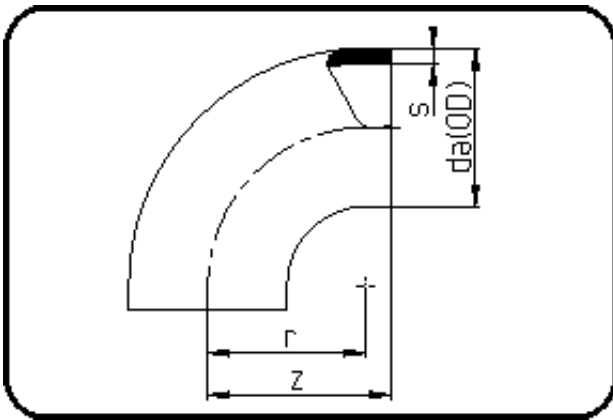


## Fittings with short Spigot



Code: 001

- Bend 90°
- short spigot
- injection moulded
- **Butt-welding**
- PPR grey

Dimension	Code	Detail	Weight
355	11.001.0355.33	355X10,9 SDR33 ISO S-16	6.36

	Unit	Nominale	Tol+	Tol-
da(OD)	mm	355	3.20	0.00
r	mm	300	0.00	0.00
s	mm	10,9	1.20	0.00
z	mm	340	6.00	6.00