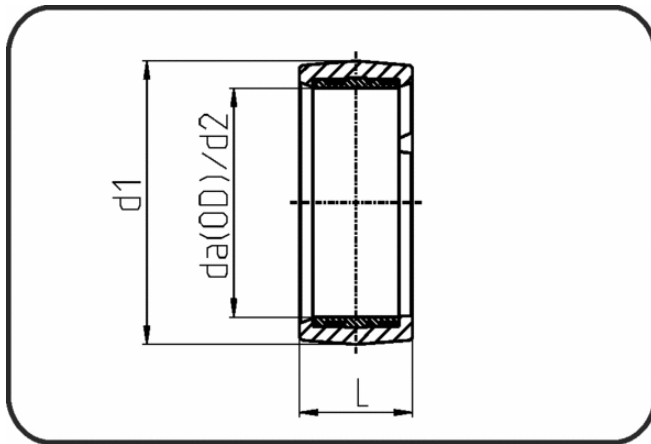


## PPR Poly-Flo



Code: 199

- Poly-Flo Induction E-Coupler

- injection moulded
- Induction welding
- PPR grey

Welding machine please see Welding Technology.

Dimension	Code	Detail	da(OD) mm	L mm	d1 mm	Weight
50	11.199.0050.17	50 SDR17	50	25	62,5	0.03
90	11.199.0090.17	90 SDR17	90	30	106,5	0.08
160	11.199.0160.17	160 SDR17	160	50	185	0.34