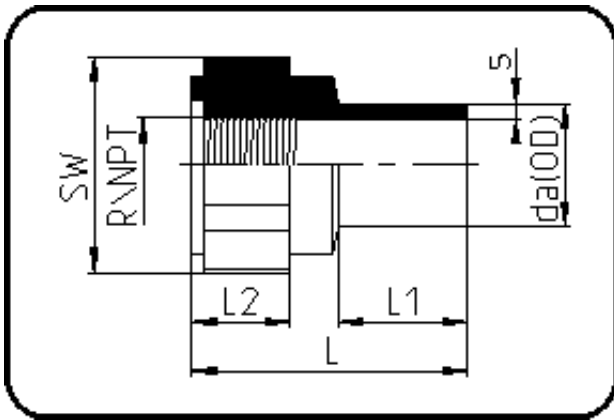


Fittings



Code: 032

- Adaptor Female Thread
- R-thread/FRP-reinforced
- injection moulded
- **Butt + IR + HPF-welding**
- PVDF natural

Dimension	Code	Detail	Weight
63	30.032.6363.21	63X2" SDR21 MOP 10 bar	0.25

	Unit	Nominale	Tol+	Tol-
da(OD)	mm	63	0.40	0.00
L	mm	75	3.00	3.00
L1	mm	35	1.50	1.50
SW	mm	85	2.25	2.25
L2	mm	28	1.50	1.50
s	mm	3	0.60	0.00
R	inch	2	0.00	0.00
E	mm	59,61	0.00	0.00
K	mm	56,66	0.00	0.00