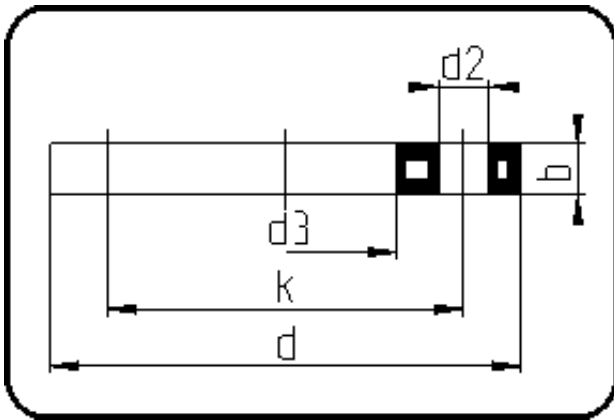


## Backing Rings, Accessories



Code: 013

- Backing Ring ANSI
- steel insert
- injection moulded
- **Flange connection**
- **PP-FRP black**

The torques nm[NM] specified in the technical catalogue are to be used as maximum values.

Dimension	Code	Detail	Weight
20	14.013.0020.11	20 - 1/2" - MOP 16 bar	0.20

	Unit	Nominale	Tol+	Tol-
da(OD)	mm	20	0.00	0.00
b	mm	12	1.50	1.50
numb	pc	4	0.00	0.00
d	mm	95	1.50	1.50
d3	mm	28	2.25	0.00
nm	[NM]	20	0.00	0.00
d2	mm	16	0.75	0.75
p	bar	16	0.00	0.00
da	inch	0,5	0.00	0.00
k	mm	60,45	0.75	0.75