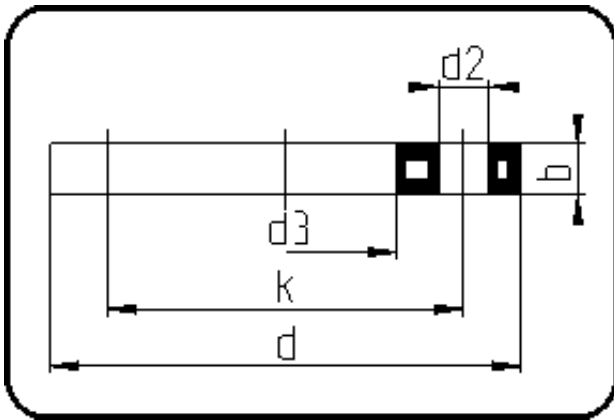


Backing Rings, Accessories



Code: 11.014.1

- Backing Ring DIN
- steel insert/for stub flange
- injection moulded+drilled PN16
- **Flange connection**
- PP-FRP grey

The torques nm[NM] specified in the technical catalogue are to be used as maximum values.

Dimension	Code	Detail	Weight
315	11.014.1315.11	315 - MOP 16 bar	8.40

	Unit	Nominale	Tol+	Tol-
da(OD)	mm	315	0.00	0.00
b	mm	30	1.50	1.50
DN	mm	300	0.00	0.00
numb	pc	12	0.00	0.00
d	mm	478	1.50	0.00
d3	mm	338	2.25	0.00
nm	[NM]	130	0.00	0.00
d2	mm	26	0.75	0.75
p	bar	16	0.00	0.00
K	mm	M24	0.00	0.00
k	mm	410	0.75	0.75