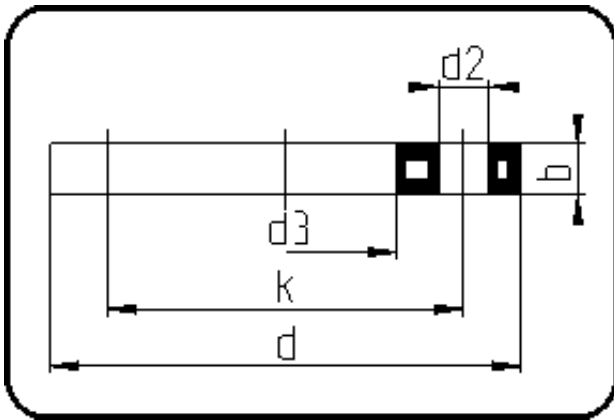


Fittings with short Spigot



Code: 014

- Backing Ring DIN
- steel insert/for stub flange
- flame retardant & el-conduct.
- injection moulded+drilled PN10
- **Flange connection**
- **PPs-el black**

Dimension	Code	Detail	Weight
225	19.014.0225.11	225 - MOP 16 bar	3.58

	Unit	Nominale	Tol+	Tol-
da(OD)	mm	225	0.00	0.00
b	mm	25	1.50	1.50
DN	mm	200	0.00	0.00
numb	pc	8	0.00	0.00
d	mm	340	1.50	1.50
d3	mm	238	2.25	0.00
nm	[NM]	120	0.00	0.00
d2	mm	22	0.75	0.75
K	mm	M20	0.00	0.00
k	mm	295	0.75	0.75