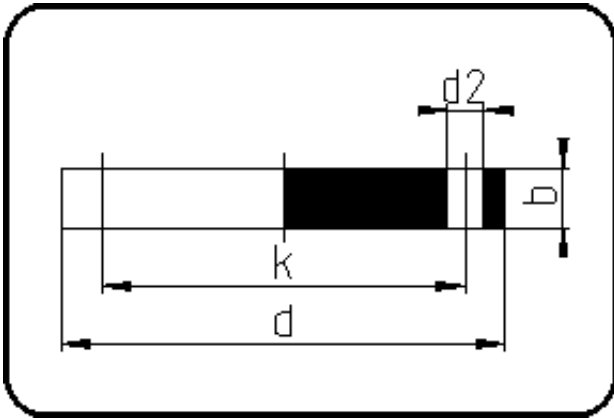


Backing Rings, Accessories



Code: 30.334

- Blind Flange no steel insert
- DIN/pressureless applications
- machined/drilled PN10
- **Flange connection**
- PVDF natural

Dimension	Code	Detail	Weight
200/225	30.334.0200.00	200/225	3.17

	Unit	Nominale	Tol+	Tol-
da(OD)	mm	200	0.00	0.00
b	mm	19	4.50	0.00
DN	mm	200	0.00	0.00
numb	pc	8	0.00	0.00
d	mm	340	0.75	0.75
d2	mm	22	0.75	0.75
K	mm	M20	0.00	0.00
k	mm	295	0.75	0.75