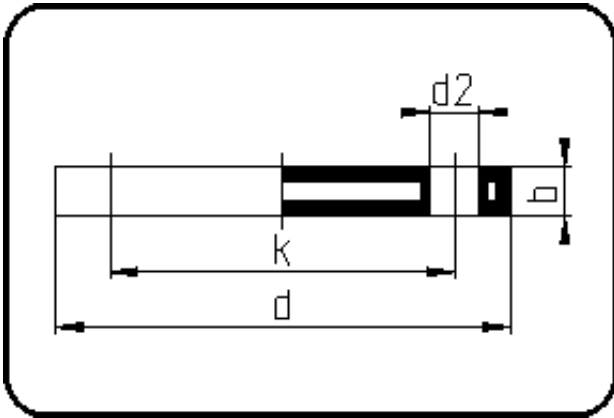


Backing Rings, Accessories



Code: 11.043

- Blind Flange ANSI
- steel insert
- injection moulded
- **Flange connection**
- **PP-FRP grey**

The torques nm[NM] specified in the technical catalogue are to be used as maximum values.

Dimension	Code	Detail	Weight
75	11.043.0075.11	75 - 2 1/2" - MOP 16 bar	1.54

	Unit	Nominale	Tol+	Tol-
da(OD)	mm	75	0.70	0.00
b	mm	18	0.75	0.75
numb	pc	4	0.00	0.00
d	mm	184	1.50	1.50
nm	[NM]	60	0.00	0.00
d2	mm	20	0.75	0.75
p	bar	16	0.00	0.00
da	inch	2,5	0.00	0.00
k	mm	139,7	0.75	0.75