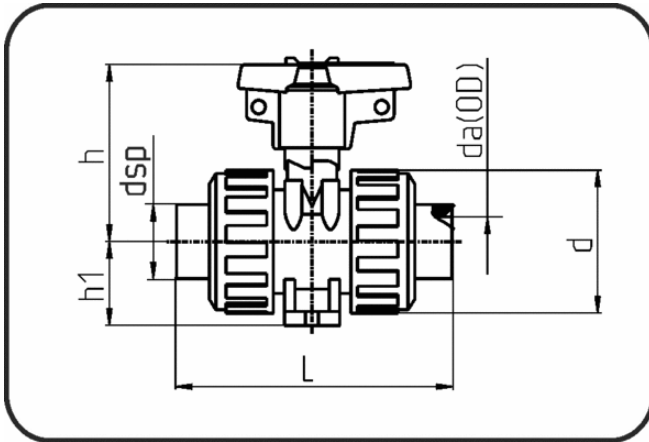


Valves



Code: 363.12

- Ball Valve M1
- EPDM-sealing
- injection moulded
- Socket-welding
- PP grey

Dimension	Code	Detail	da(OD) mm	L mm	d mm	h mm	b mm	Weight
20	11.363.1220.11	20 - MOP 10 bar	20	98,5	58	74,5	40	0.18
25	11.363.1225.11	25 - MOP 10 bar	25	113	68,5	83	51,5	0.25
32	11.363.1232.11	32 - MOP 10 bar	32	123	75,5	85,5	51,5	0.34
40	11.363.1240.11	40 - MOP 10 bar	40	141	92	104,5	64	0.56
50	11.363.1250.11	50 - MOP 10 bar	50	165	108	113	73	0.82
63	11.363.1263.11	63 - MOP 10 bar	63	194,5	127,5	113,5	85	1.23
75	11.363.1275.11	75 - MOP 10 bar	75	231	160	151,5	110	2.24
90	11.363.1290.11	90 - MOP 10 bar	90	283,5	196,5	167	132	4.38
110	11.363.1211.11	110 - MOP 10 bar	110	291,5	196,5	167	132	4.33