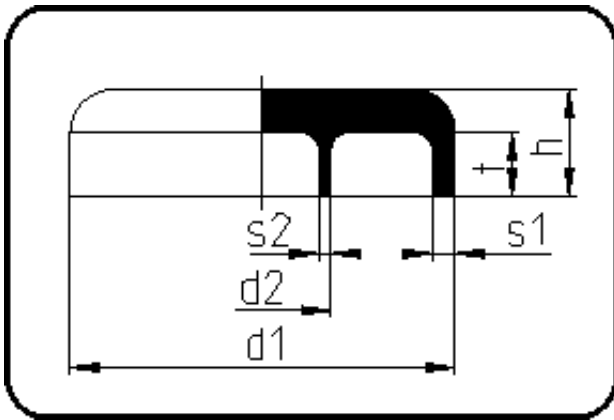


PP/PP Simultaneous Welding



Code: 154

- End Cap
- machined
- Simultaneous-welding
- PP/PP

Dimension	Code	Detail	Weight
160/90	80.154.1690.37	160/90 SDR33/17	0.71

	Unit	Nominale	Tol+	Tol-
d1	mm	160	2.25	0.00
SDR2		17	0.00	0.00
t	mm	15	0.75	0.75
SDR1		33	0.00	0.00
s2	mm	5,4	0.80	0.00
d2	mm	90	1.35	0.00
s1	mm	4,9	0.70	0.00
h	mm	50	1.50	1.50