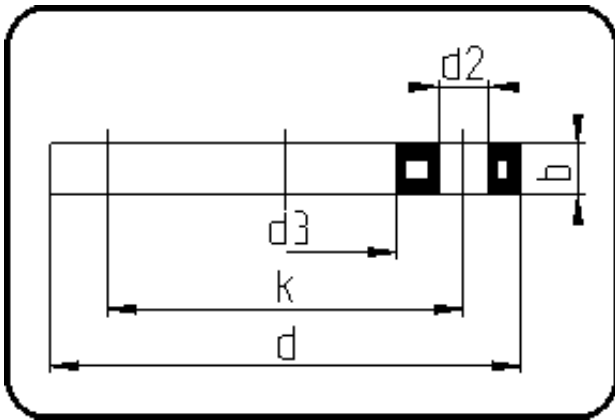


Backing Rings, Accessories



Code: 14.014

- Backing Ring DIN
- steel insert/for stub flange
- injection moulded+drilled PN10
- **Flange connection**
- **PP-FRP black**

The torques nm[NM] specified in the technical catalogue are to be used as maximum values.

Dimension	Code	Detail	Weight
355	14.014.0355.11	355 - MOP 16 bar	14.45

	Unit	Nominale	Tol+	Tol-
da(OD)	mm	355	0.00	0.00
b	mm	42	1.50	1.50
DN	mm	350	0.00	0.00
numb	pc	16	0.00	0.00
d	mm	515	1.50	1.50
d3	mm	376	2.25	0.00
nm	[NM]	160	0.00	0.00
d2	mm	22,5	0.75	0.75
p	bar	16	0.00	0.00
K	mm	M20	0.00	0.00
k	mm	460	0.75	0.75