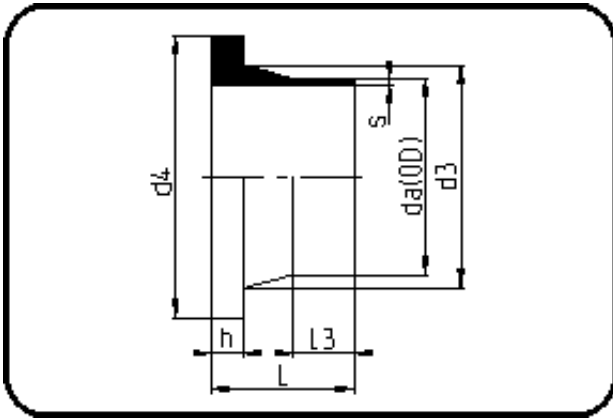


Fittings with short Spigot



Code: 012.1

- Stub Flange ANSI
- short spigot
- injection moulded
- **Butt-welding**
- PPR grey

Backing Rings please see Accessories.

Dimension	Code	Detail	Weight
20	11.012.1020.11	20X1,9 SDR11 ISO S-5	0.02

	Unit	Nominale	Tol+	Tol-
da(OD)	mm	20	0.30	0.00
L	mm	52	3.75	0.00
L3	mm	30	1.50	0.00
s	mm	1,9	0.30	0.00
d3	mm	27	0.00	3.00
h	mm	7	1.50	0.00
d4	mm	44,5	0.00	1.50
da	inch	0,5	0.00	0.00