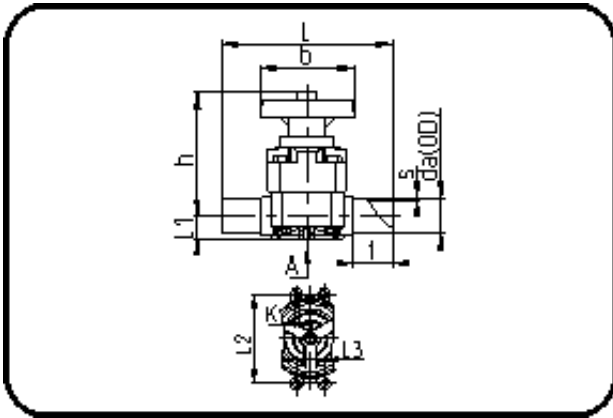


Valves



Code: 342.14

- Diaphragm Valve
- manually controlled
- EPDM diaphragm
- **Butt + IR-welding**
- **PP grey**

Dimension	Code	Detail	Weight
75	11.342.1475.11	75 - SDR11 ISO S-5	4.98

	Unit	Nominale	Tol+	Tol-
L	mm	284	6.00	6.00
s	mm	6,8	0.80	0.00
t	mm	59,5	3.00	3.00
Kv- l	min	1.205	0.00	0.00
da(OD)	mm	75	0.00	0.00
L1	mm	25	0.75	0.75
L3	mm	0	0.00	0.00
L2	mm	230	1.50	1.50
b	mm	234	1.50	1.50
DN	mm	65	0.00	0.00
h	mm	254	3.00	3.00
K	mm	M12	0.00	0.00
da	inch	2,5	0.00	0.00