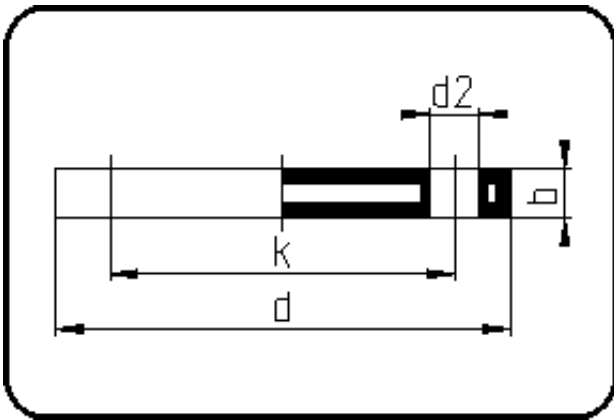


Backing Rings, Accessories



Code: 11.043

- Blind Flange ANSI
- steel insert
- injection moulded
- **Flange connection**
- **PP-FRP grey**

The torques nm[NM] specified in the technical catalogue are to be used as maximum values.

Dimension	Code	Detail	Weight
50	11.043.0050.11	50 - 1 1/2" - MOP 16 bar	0.82

	Unit	Nominale	Tol+	Tol-
da(OD)	mm	50	0.50	0.00
b	mm	18	0.75	0.75
numb	pc	4	0.00	0.00
d	mm	133	1.50	1.50
nm	[NM]	40	0.00	0.00
d2	mm	16	0.75	0.75
p	bar	16	0.00	0.00
da	inch	1,5	0.00	0.00
k	mm	98,55	0.75	0.75