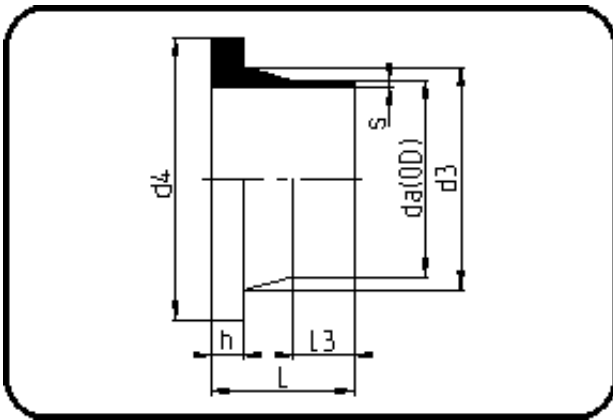


## Fittings with short Spigot



Code: 012.1

- Stub Flange ANSI
- short spigot
- injection moulded
- **Butt-welding**
- PPR grey

Backing Rings please see Accessories.

Dimension	Code	Detail	Weight
110	11.012.1110.11	110X10,0 SDR11 ISO S-5	0.44

	Unit	Nominale	Tol+	Tol-
da(OD)	mm	110	1.00	0.00
L	mm	82	3.75	0.00
L3	mm	38	1.50	0.00
s	mm	10	1.10	0.00
d3	mm	125	0.00	4.50
h	mm	18	1.50	0.00
d4	mm	158	0.00	1.50
da	inch	4	0.00	0.00