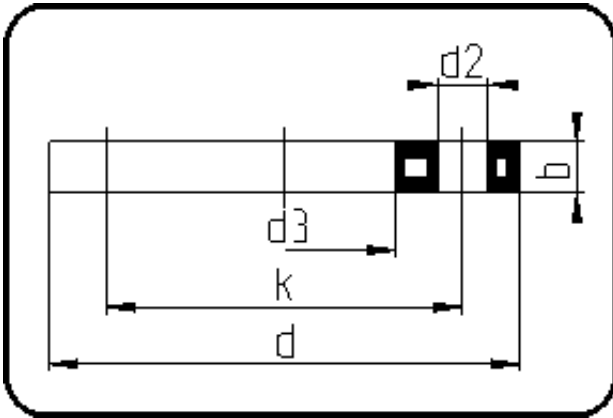


Backing Rings, Accessories



Code: 017

- Backing Ring DIN
- steel insert/for FRP
- injection moulded+drilled PN10
- **Flange connection**
- **PP-FRP black**

Dimension	Code	Detail	Weight
40	14.017.0040.11	40 - MOP 16 bar	0.59

	Unit	Nominale	Tol+	Tol-
da(OD)	mm	40	0.00	0.00
b	mm	18	1.00	1.00
DN	mm	32	0.00	0.00
numb	pc	4	0.00	0.00
d	mm	140	1.00	0.00
d3	mm	60	1.50	0.00
nm	[NM]	25	0.00	0.00
d2	mm	18	0.50	0.50
K	mm	M16	0.00	0.00
k	mm	100	0.50	0.50