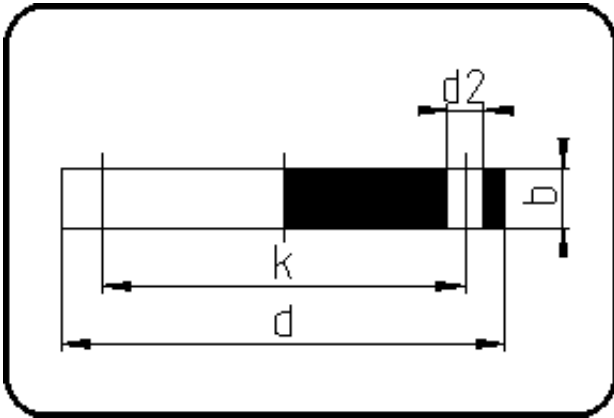


## Backing Rings, Accessories



Code: 12.334

- Blind Flange no steel insert
- DIN/pressureless applications
- machined/drilled PN10
- **Flange connection**
- PPH grey

Dimension	Code	Detail	Weight
450/500	12.334.0450.00	450/500	14.40

	Unit	Nominale	Tol+	Tol-
da(OD)	mm	450	0.00	0.00
b	mm	45	0.75	0.75
DN	mm	500	0.00	0.00
numb	pc	20	0.00	0.00
d	mm	670	1.50	1.50
d2	mm	27	0.75	0.75
K	mm	M24	0.00	0.00
k	mm	620	0.75	0.75