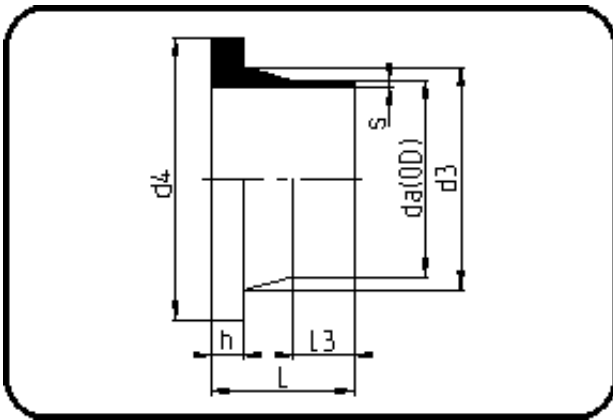


## Fittings with short Spigot



Code: 012.1

- **Stub Flange ANSI**
- short spigot
- injection moulded
- **Butt-welding**
- **PPR grey**

Backing Rings please see Accessories.

Dimension	Code	Detail	Weight
400	11.012.1400.11	400X36,3 SDR11 ISO S-5	8.62

	Unit	Nominale	Tol+	Tol-
da(OD)	mm	400	3.60	0.00
L	mm	155	4.00	0.00
L3	mm	70	2.00	0.00
s	mm	36,3	3.80	0.00
d3	mm	427	0.00	5.00
h	mm	46	1.00	0.00
d4	mm	493	0.00	2.25
da	inch	16	0.00	0.00