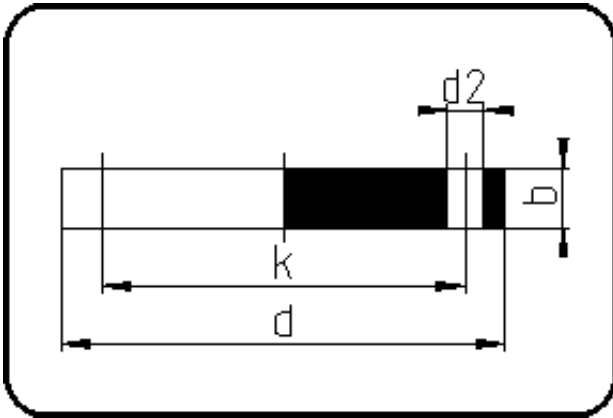


## Backing Rings, Accessories



Code: 12.334

- Blind Flange no steel insert
- DIN/pressureless applications
- machined/drilled PN10
- **Flange connection**
- PPH grey

Dimension	Code	Detail	Weight
40	12.334.0040.00	40	0.29

	Unit	Nominale	Tol+	Tol-
da(OD)	mm	40	0.00	0.00
b	mm	20	0.75	0.75
DN	mm	32	0.00	0.00
numb	pc	4	0.00	0.00
d	mm	140	1.50	1.50
d2	mm	18	0.75	0.75
K	mm	M16	0.00	0.00
k	mm	100	0.75	0.75