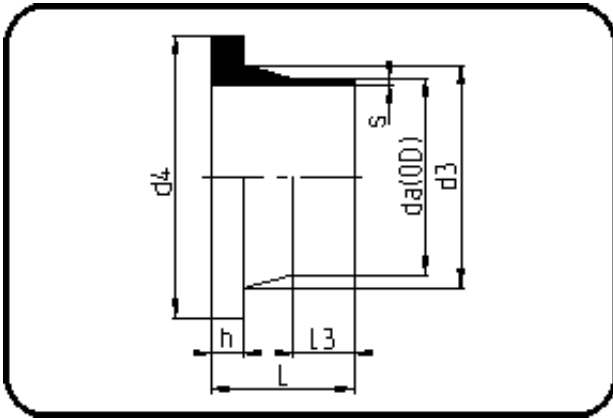


Fittings



Code: 012

- Stub Flange DIN
- short spigot
- injection moulded
- **Butt + IR + HPF-welding**
- PVDF natural

Backing Rings please see Accessories.

Dimension	Code	Detail	Weight
110	30.012.0110.33	110X3,4 SDR33 ISO S-16	0.46

	Unit	Nominale	Tol+	Tol-
da(OD)	mm	110	0.50	0.00
L	mm	80	3.75	0.00
L3	mm	42	1.50	0.00
s	mm	3,4	0.60	0.00
d3	mm	125	0.00	4.50
h	mm	12	0.75	0.00
d4	mm	158	0.00	1.50