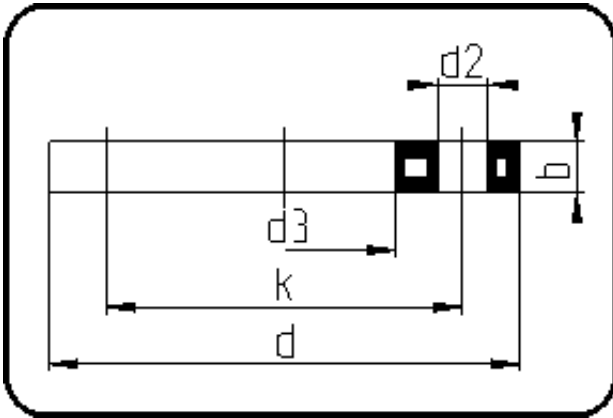


## Backing Rings, Accessories



Code: 017

- Backing Ring DIN
- steel insert/for FRP
- injection moulded+drilled PN10
- **Flange connection**
- **PP-FRP black**

Dimension	Code	Detail	Weight
400	14.017.0400.11	400 - MOP 16 bar	16.50

	Unit	Nominale	Tol+	Tol-
da(OD)	mm	400	0.00	0.00
b	mm	46	1.00	1.00
DN	mm	400	0.00	0.00
numb	pc	16	0.00	0.00
d	mm	574	1.00	0.00
d3	mm	442	1.50	0.00
nm	[NM]	170	0.00	0.00
d2	mm	26	0.50	0.50
K	mm	M24	0.00	0.00
k	mm	515	0.50	0.50