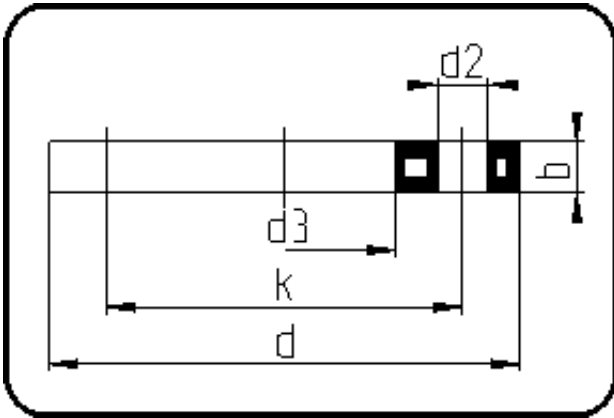


Backing Rings, Accessories



Code: 11.014.1

- Backing Ring DIN
- steel insert/for stub flange
- injection moulded+drilled PN16
- **Flange connection**
- **PP-FRP grey**

The torques nm[NM] specified in the technical catalogue are to be used as maximum values.

Dimension	Code	Detail	Weight
200	11.014.1200.11	200 - MOP 16 bar	3.30

	Unit	Nominale	Tol+	Tol-
da(OD)	mm	200	0.00	0.00
b	mm	24	1.50	1.50
DN	mm	200	0.00	0.00
numb	pc	12	0.00	0.00
d	mm	340	1.50	0.00
d3	mm	235	2.25	0.00
nm	[NM]	120	0.00	0.00
d2	mm	22	0.75	0.75
p	bar	16	0.00	0.00
K	mm	M20	0.00	0.00
k	mm	295	0.75	0.75