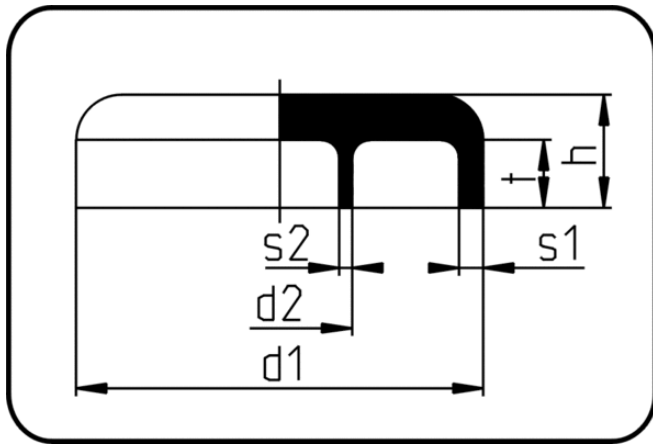


PP/PP Simultaneous Welding



Code: 154

- End Cap
- machined
- Simultaneous-welding
- PP/PP

Dimension	Code	Detail	s1 mm	s2 mm	d1 mm	d2 mm	h mm	t mm	Weight
160/90	80.154.1690.37	160/90 SDR33/17	4,9	5,4	160	90	50	15	0.71
160/90	80.154.1690.31	160/90 SDR33/11	4,9	8,2	160	90	50	15	0.74
280/160	80.154.2816.31	280/160 SDR33/11	8,6	14,6	280	160	50	15	2.00
315/200	80.154.3120.31	315/200 SDR33/11	9,7	18,2	315	200	60	15	3.60
355/250	80.154.3525.31	355/250 SDR33/11	10,9	22,8	355	250	60	15	4.62