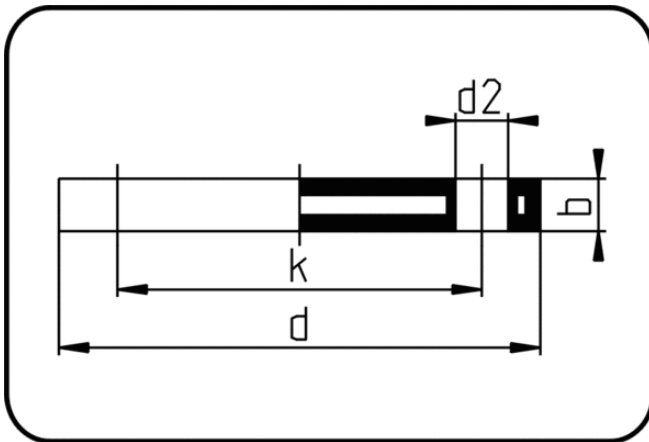


Backing Rings, Accessories



Code: 11.043

- **Blind Flange ANSI**
- steel insert
- injection moulded
- **Flange connection**
- **PP-FRP grey**

The torques nm[NM] specified in the technical catalogue are to be used as maximum values.

Dimension	Code	Detail	da(OD) mm	d mm	d2 mm	b mm	k mm	Weight
20	11.043.0020.11	20 - 1/2" - MOP 16 bar	20	95	16	12	60,45	0.26
25	11.043.0025.11	25 - 3/4" - MOP 16 bar	25	102	16	12	69,85	0.31
32	11.043.0032.11	32 - 1" - MOP 16 bar	32	114	16	16	79,25	0.51
40	11.043.0040.11	40 - 1 1/4" - MOP 16 bar	40	130	16	16	88,9	0.73
50	11.043.0050.11	50 - 1 1/2" - MOP 16 bar	50	133	16	18	98,55	0.82
63	11.043.0063.11	63 - 2" - MOP 16 bar	63	162	20	18,5	120,65	1.22
75	11.043.0075.11	75 - 2 1/2" - MOP 16 bar	75	184	20	18	139,7	1.54
90	11.043.0090.11	90 - 3" - MOP 16 bar	90	194	20	18	152,4	1.84
110/125	11.043.0110.11	110/125 - 4" - MOP 16 bar	110	229	20	18	190,5	2.88
160	11.043.0160.11	160 - 6" - MOP 16 bar	160	283	22	24	241,3	5.00
200/225	11.043.0200.11	200/225 - 8" - MOP 16 bar	200	345	22	24	298,45	7.92
250/280	11.043.0250.11	250/280 - 10" - MOP 16 bar	250	412	25	27	361,95	14.80
315	11.043.0315.11	315 - 12" - MOP 16 bar	315	487	25	33	431,8	29.00