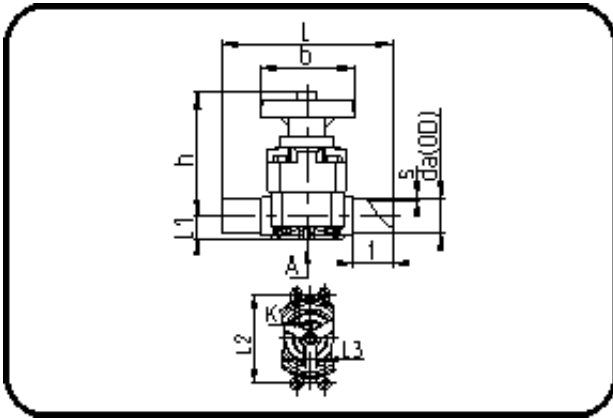


## Valves



Code: 342.14

- Diaphragm Valve
- manually controlled
- EPDM diaphragm
- **Butt + IR-welding**
- **PP grey**

Dimension	Code	Detail	Weight
25	11.342.1425.11	25 - SDR11 ISO S-5	0.44

	Unit	Nominale	Tol+	Tol-
L	mm	144	3.30	3.30
s	mm	2,7	0.40	0.00
t	mm	36	1.50	1.50
Kv- l	min	93	0.00	0.00
da(OD)	mm	25	0.00	0.00
L1	mm	16,5	0.75	0.75
L3	mm	0	0.00	0.00
L2	mm	24,5	0.75	0.75
b	mm	85	1.50	1.50
DN	mm	20	0.00	0.00
h	mm	100	3.00	3.00
K	mm	M6	0.00	0.00
da	inch	0,75	0.00	0.00