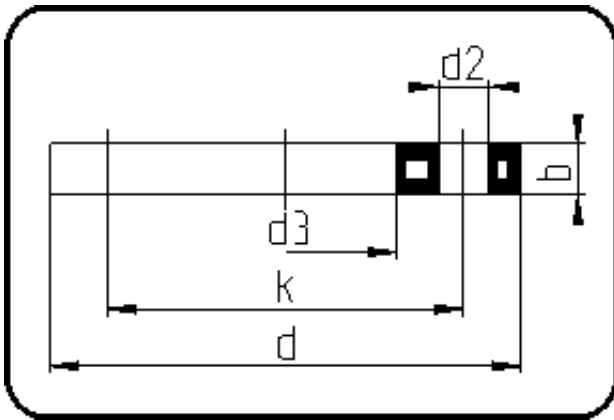


## Backing Rings, Accessories



Code: 017

- Backing Ring DIN
- steel insert/for FRP
- injection moulded+drilled PN10
- **Flange connection**
- **PP-FRP black**

Dimension	Code	Detail	Weight
315	14.017.0315.11	315 - MOP 16 bar	9.76

	Unit	Nominale	Tol+	Tol-
da(OD)	mm	315	0.00	0.00
b	mm	34	1.00	1.00
DN	mm	300	0.00	0.00
numb	pc	12	0.00	0.00
d	mm	463	1.00	0.00
d3	mm	344	1.50	0.00
nm	[NM]	110	0.00	0.00
d2	mm	23	0.50	0.50
K	mm	M20	0.00	0.00
k	mm	400	0.50	0.50