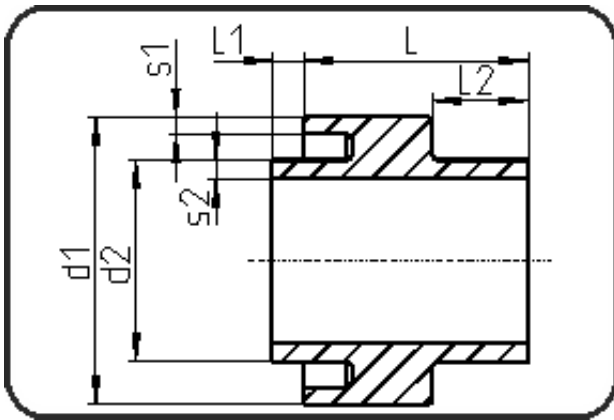


## PE 100-RC Poly-Flo



Code: 197

- Poly-Flo Dog Bone
- with transition to single tube
- machined
- **simultaneous + cascade welding**
- PE 100-RC black

| Dimension | Code           | Detail         | Weight |
|-----------|----------------|----------------|--------|
| 90/63     | 70.197.9063.71 | 90/63 SDR17/11 | 0.20   |

|    | Unit | Nominale | Tol+ | Tol- |
|----|------|----------|------|------|
| L  | mm   | 70       | 3.00 | 3.00 |
| L1 | mm   | 10       | 1.50 | 1.50 |
| L2 | mm   | 30       | 1.50 | 1.50 |
| d1 | mm   | 90       | 1.35 | 0.00 |
| s2 | mm   | 5,8      | 0.70 | 0.00 |
| d2 | mm   | 63       | 0.90 | 0.00 |
| s1 | mm   | 5,4      | 0.70 | 0.00 |