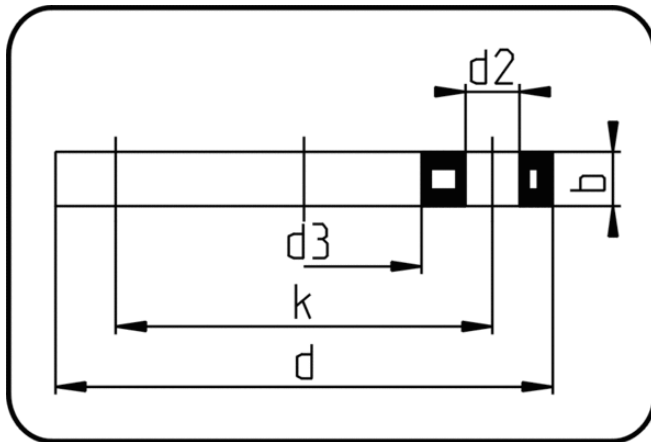


Backing Rings, Accessories



Code: 11.014.1

- Backing Ring DIN
- steel insert/for stub flange
- injection moulded+drilled PN16
- Flange connection
- PP-FRP grey

The torques nm[NM] specified in the technical catalogue are to be used as maximum values.

Dimension	Code	Detail	da(OD) mm	d mm	d2 mm	d3 mm	b mm	k mm	Weight
200	11.014.1200.11	200 - MOP 16 bar	200	340	22	235	24	295	3.30
225	11.014.1225.11	225 - MOP 16 bar	225	340	22	238	24	295	2.83
250	11.014.1250.11	250 - MOP 16 bar	250	418	26	288	30	355	6.80
280	11.014.1280.11	280 - MOP 16 bar	280	418	26	294	30	355	6.95
315	11.014.1315.11	315 - MOP 16 bar	315	478	26	338	30	410	8.40
355	11.014.1355.11	355 - MOP 16 bar	355	530	26	376	42	470	16.52
400	11.014.1400.11	400 - MOP 16 bar	400	599	30	430	41	525	17.00