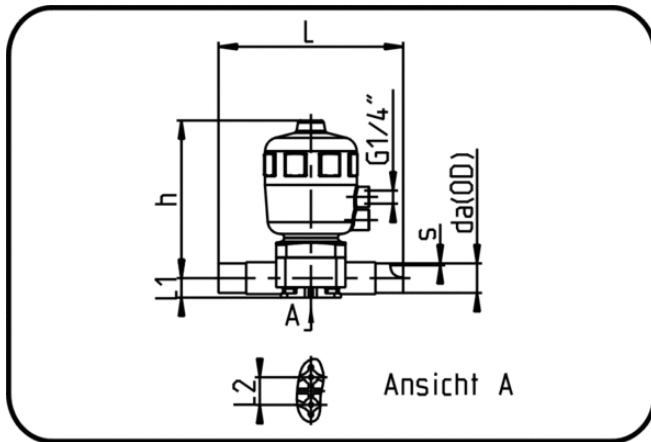


Valves



Code: 341.2

- Diaphragm Valve Pneumatic
- double effective impulse
- EPDM/PTFE diaphragm
- **Butt + IR-welding**
- **ECTFE natural**

Dimension	Code	Detail	da(OD) mm	s mm	L mm	L1 mm	L2 mm	h mm	Weight
20	40.341.2020.21	20 - SDR21 MOP 10 bar	20	1,9	133	16,5	24,5	170	1.04
25	40.341.2025.21	25 - SDR21 MOP 10 bar	25	1,9	144	16,5	24,5	170	1.04
32	40.341.2032.21	32 - SDR21 MOP 10 bar	32	2,4	154	20,5	24,5	175	1.40
40	40.341.2040.21	40 - SDR21 MOP 10 bar	40	2,4	193	25,5	44	273	3.81
50	40.341.2050.21	50 - SDR21 MOP 10 bar	50	3	194	32	44	273	4.06
63	40.341.2063.21	63 - SDR21 MOP 10 bar	63	3	224	38,5	44	277	5.12