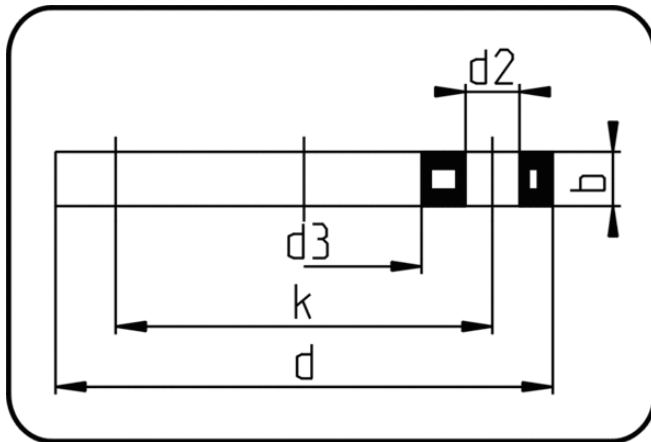


Fittings with short Spigot



Code: 014

- Backing Ring DIN
- steel insert/for stub flange
- flame retardant & el-conduct.
- inj. moulded+drilled PN10/16
- **Flange connection**
- **PPs-el black**

Dimension	Code	Detail	da(OD) mm	d mm	d2 mm	d3 mm	b mm	k mm	Weight
32	19.014.0032.11	32 - MOP 16 bar	32	115	14	42	16	85	0.37
40	19.014.0040.11	40 - MOP 16 bar	32	140	18	51	18	100	0.64
50	19.014.0050.11	50 - MOP 16 bar	50	150	18	62	18	110	0.72
63	19.014.0063.11	63 - MOP 16 bar	63	165	18	78	18	125	0.83
75	19.014.0075.11	75 - MOP 16 bar	75	186	18	92	18	145	1.14
90	19.014.0090.11	90 - MOP 16 bar	90	202	18	108	20	160	1.23
110/125	19.014.0110.11	110/125 - MOP 16 bar	110	220	18	133	20	180	1.27
160/180	19.014.0160.11	160/180 - MOP 16 bar	160	285	22	190	23	240	2.42