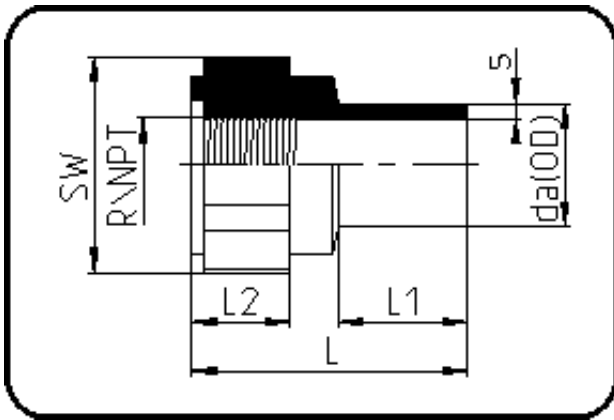


Fittings



Code: 032

- Adapter Innengewinde
- R-Gewinde/GFK-verstärkt
- formgespritzt
- **Stumpf+IR-Schweissung**
- PP Pure grau

Dimension	Code	Detail	Gewicht
20	72.032.2020.11	20X1/2" SDR11 ISO S-5	0.01

	Einheit	Nominale	Tol+	Tol-
da(OD)	mm	20	0.30	0.00
L	mm	45	3.00	3.00
L1	mm	21	1.50	1.50
SW	mm	32	2.25	2.25
L2	mm	16	1.50	1.50
s	mm	1,9	0.30	0.00
R	inch	0,5	0.00	0.00
E	mm	20,96	0.00	0.00
K	mm	18,63	0.00	0.00