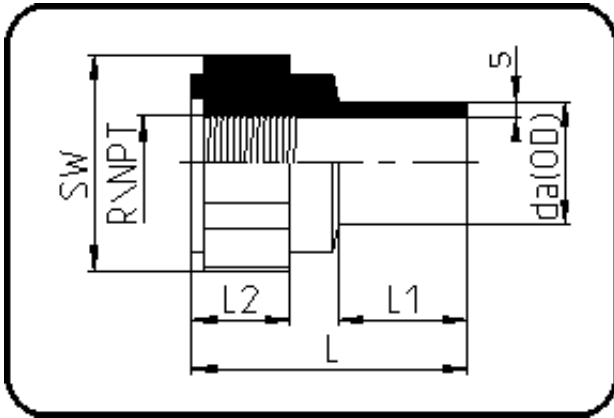


Fittings



Code: 032

- Adapter Innengewinde
- R-Gewinde
- formgespritzt
- **Stumpf+IR+HPF-Schweissung**
- **PVDF UHP natur**

Dimension	Code	Detail	Gewicht
25	35.032.2525.21	25X3/4" SDR21 MOP 10 bar	0.05

	Einheit	Nominale	Tol+	Tol-
da(OD)	mm	25	0.30	0.00
L	mm	51	3.00	3.00
L1	mm	23	1.50	1.50
SW	mm	41	2.25	2.25
L2	mm	18	1.50	1.50
s	mm	1,9	0.40	0.00
R	inch	0,75	0.00	0.00
E	mm	26,44	0.00	0.00
K	mm	24,12	0.00	0.00