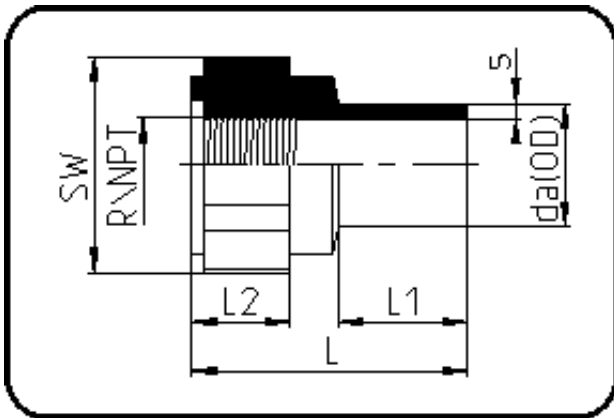


## Fittings



Code: 032.1

- Adapter Innengewinde
- NPT-Gewinde/GFK-verstärkt
- formgespritzt
- **Stumpf+IR-Schweissung**
- PP Pure grau

Dimension	Code	Detail	Gewicht
40	72.032.4041.11	40X1 1/4" SDR11 ISO S-5	0.05

	Einheit	Nominale	Tol+	Tol-
da(OD)	mm	40	0.40	0.00
L	mm	62	3.00	3.00
L1	mm	30	1.50	1.50
NPT	inch	1,25	0.00	0.00
nr	ril	1,77	0.00	0.00
SW	mm	55	2.25	2.25
L2	mm	24	1.50	1.50
s	mm	3,7	0.50	0.00
E	mm	10,67	0.00	0.00
K	mm	39,55	0.00	0.00