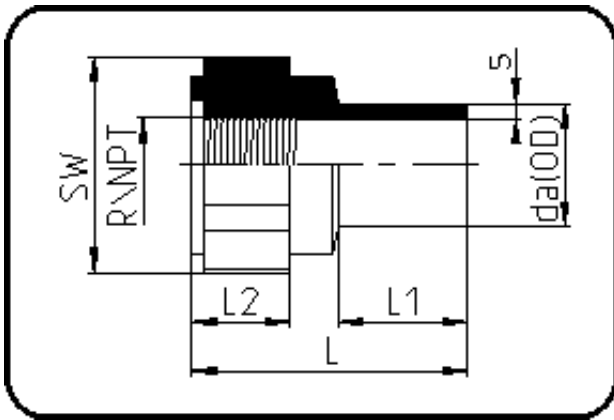


Fittings



Code: 032.1

- Adapter Innengewinde
- NPT-Gewinde
- formgespritzt
- **Stumpf+IR+HPF-Schweissung**
- PVDF UHP natur

Dimension	Code	Detail	Gewicht
32	35.032.3233.21	32X1" SDR21 MOP 10 bar	0.06

	Einheit	Nominale	Tol+	Tol-
da(OD)	mm	32	0.30	0.00
L	mm	58	3.00	3.00
L1	mm	30	1.50	1.50
NPT	inch	1	0.00	0.00
nr	ril	1,77	0.00	0.00
SW	mm	46	2.25	2.25
L2	mm	20	1.50	1.50
s	mm	2,4	0.50	0.00
E	mm	10,16	0.00	0.00
K	mm	30,83	0.00	0.00