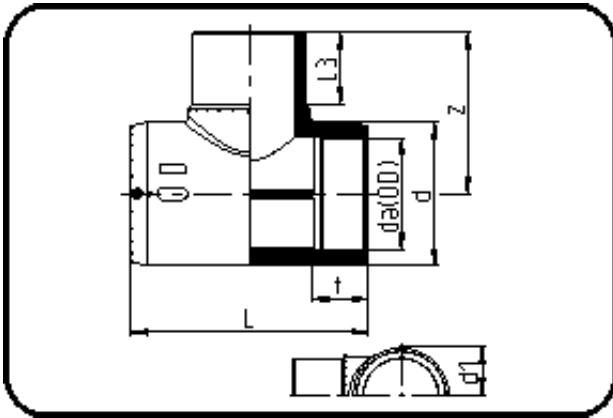


## E-Schweissbare Fittings



Code: 176

- E-T-Stück
- MOP Wasser 16bar / Gas 10bar
- W/P-TW
- formgespritzt
- **Heizwendel-Schweissung**
- PE 100-RC schwarz

Dimension	Code	Detail	Gewicht
200	70.176.0200.11	200 SDR 17-11	10.98

	Einheit	Nominale	Tol+	Tol-
da(OD)	mm	200	1.20	0.00
L	mm	424,4	6.00	0.00
L3	mm	138,5	2.25	2.25
d	mm	264	1.50	1.50
d1	mm	139	1.50	1.50
t	mm	105	3.00	3.00
z	mm	302	3.00	3.00