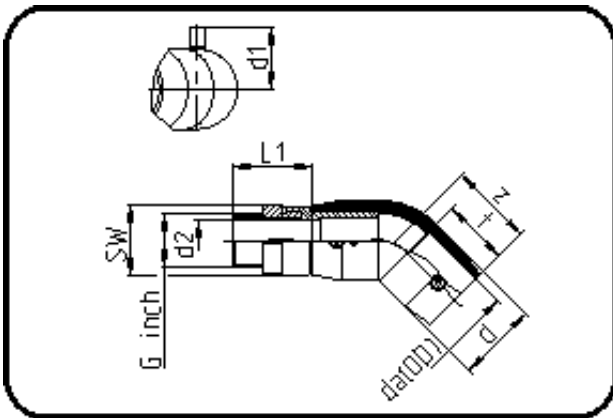


E-Schweissbare Fittings



Code: 188

- E-Übergangswinkel 45°
- mit Messing-Aussengewinde
- W/P-TW
- formgespritzt
- Heizwendel-Schweissung
- PE 100-RC schwarz

Dimension	Code	Detail	Gewicht
50 X 1 1/2	70.188.5050.11	50X1 1/2" SDR 17-11 PN16	0.57

	Einheit	Nominale	Tol+	Tol-
da(OD)	mm	50	0.00	0.00
L1	mm	55	1.50	1.50
SW	mm	60	0.00	0.00
G	inch	1,5	0.00	0.00
d	mm	67	0.75	0.75
d1	mm	49	1.50	1.50
t	mm	55	0.00	0.90
E	mm	47,80	0.00	0.00
d2	mm	33,5	0.00	0.00
K	mm	44,85	0.00	0.00
z	mm	70	2.25	2.25