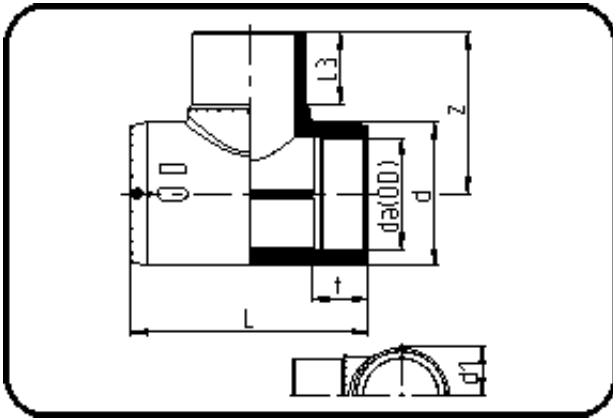


E-Schweisbare Fittings



Code: 176

- E-T-Stück
- MOP Wasser 16bar / Gas 10bar
- W/P-TW
- formgespritzt
- **Heizwendel-Schweissung**
- PE 100-RC schwarz

Dimension	Code	Detail	Gewicht
180	70.176.0180.11	180 SDR 17-11	8.85

	Einheit	Nominale	Tol+	Tol-
da(OD)	mm	180	0.00	0.00
L	mm	419	6.00	0.00
L3	mm	130	2.25	2.25
d	mm	232	1.50	1.50
d1	mm	123,5	1.50	1.50
t	mm	98	3.00	3.00
z	mm	275	2.25	2.25