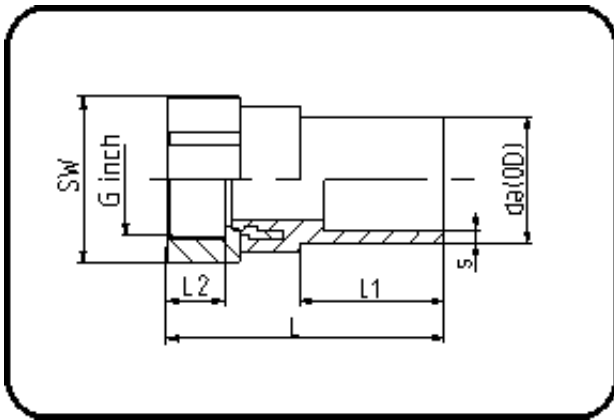


E-Schweissbare Fittings



Code: 180

- Messing-R-Innengewinde
- für E-Übergang
- W/P-TW
- formgespritzt
- Heizwendel-Schweissung
- PE 100-RC schwarz

| Dimension | Code | Detail | Gewicht |
|-----------|----------------|---------------------|---------|
| 20 X 1/2 | 70.180.0020.11 | 20X1/2" SDR 11 PN16 | 0.13 |

| | Einheit | Nominale | Tol+ | Tol- |
|--------|---------|----------|------|------|
| da(OD) | mm | 20 | 0.30 | 0.00 |
| L | mm | 76 | 1.50 | 1.50 |
| L1 | mm | 40 | 1.50 | 1.50 |
| SW | mm | 32 | 0.00 | 0.00 |
| G | inch | 0,5 | 0.00 | 0.00 |
| L2 | mm | 15 | 0.75 | 0.00 |
| s | mm | 3 | 0.40 | 0.00 |
| E | mm | 20,96 | 0.00 | 0.00 |
| K | mm | 18,63 | 0.00 | 0.00 |