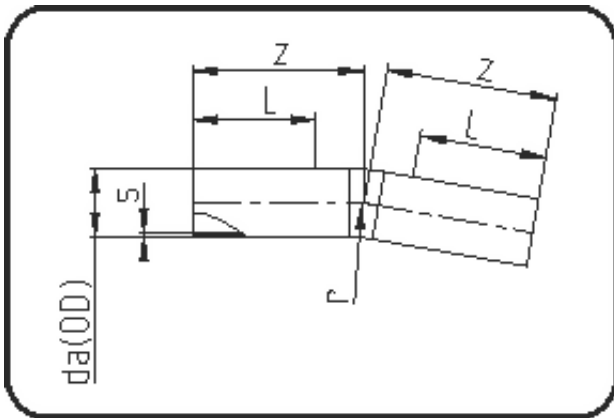


Rohrbögen



Code: 394

- Rohrbogen 11°
- Radius 1,5 x da
- aus Rohr geformt
- **Stumpf + E-Muffenschweissung**
- **PE 100-RC schwarz**

Dimension	Code	Detail	Gewicht
630	70.394.0630.17	630 SDR17 ISO S-8 10 bar	176.00

	Einheit	Nominale	Tol+	Tol-
da(OD)	mm	630	0.00	0.00
L	mm	750	0.00	0.00
r	mm	945	0.00	0.00
s	mm	37,4	0.00	0.00
z	mm	1.250	75.00	75.00