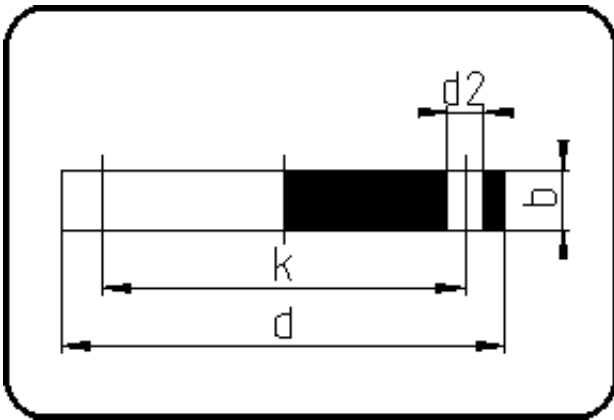


Flansche, Zubehör



Code: 90.043

- **Blindflansch ANSI**
- ASME B16.5 Class 150
- **Flanschverbindung**
- **Stahl feuerverzinkt**

** Auf Anfrage.

Dimension	Code	Detail	Gewicht
355	90.043.0355.17	355 - 14" MOP 20 bar	57.00

	Einheit	Nominale	Tol+	Tol-
da(OD)	mm	355	0.00	0.00
b	mm	33,4	2.50	0.00
numb	Stk	12	0.00	0.00
d	mm	535	2.00	2.00
d2	mm	29	1.00	1.00
p	bar	20	0.00	0.00
da	inch	14	0.00	0.00
k	mm	476,25	1.00	1.00