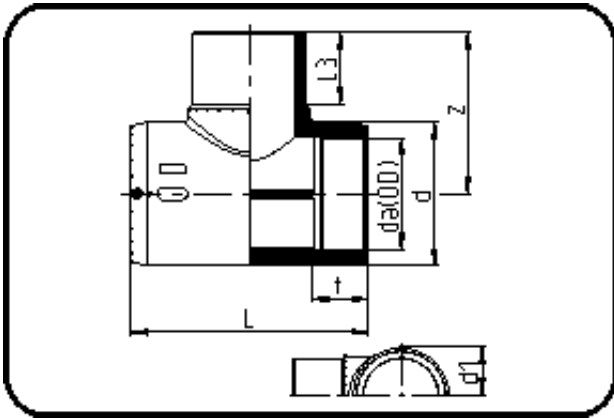


E-Schweissbare Fittings



Code: 176

- E-T-Stück
- MOP Wasser 16bar / Gas 10bar
- W/P-TW
- formgespritzt
- **Heizwendel-Schweissung**
- PE 100-RC schwarz

Dimension	Code	Detail	Gewicht
160	70.176.0160.11	160 SDR 17-11	6.25

	Einheit	Nominale	Tol+	Tol-
da(OD)	mm	160	1.00	0.00
L	mm	370,5	6.00	0.00
L3	mm	120	2.25	2.25
d	mm	211,5	1.50	1.50
d1	mm	110,5	1.50	1.50
t	mm	85	3.00	3.00
z	mm	246	2.25	2.25