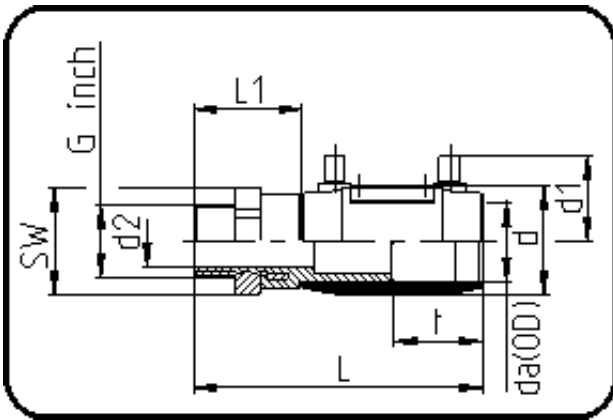


## E-Schweissbare Fittings



Code: 185

- E-Übergangsmuffe
- mit Messing-Aussengewinde
- W/P-TW
- formgespritzt
- Heizwendel-Schweissung
- PE 100-RC schwarz

Dimension	Code	Detail	Gewicht
50 X 1 1/4	70.185.4050.11	50X1 1/4" SDR 17-11 PN16	0.57

	Einheit	Nominale	Tol+	Tol-
da(OD)	mm	50	0.00	0.00
L	mm	162	3.00	3.00
L1	mm	51	2.00	2.00
SW	mm	60	0.00	0.00
G	inch	1,25	0.00	0.00
d	mm	67	1.00	1.00
d1	mm	53	1.50	1.50
t	mm	55	1.50	1.50
E	mm	41,91	0.00	0.00
d2	mm	28	2.00	2.00
K	mm	38,95	0.00	0.00