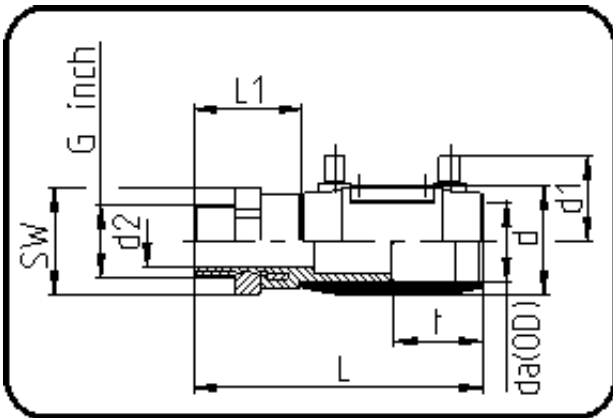


## E-Schweissbare Fittings



Code: 185

- E-Übergangsmuffe
- mit Messing-Aussengewinde
- W/P-TW
- formgespritzt
- Heizwendel-Schweissung
- PE 100-RC schwarz

Dimension	Code	Detail	Gewicht
32 X 1/2	70.185.2032.11	32X1/2" SDR 11 PN16	0.26

	Einheit	Nominale	Tol+	Tol-
da(OD)	mm	32	0.00	0.00
L	mm	132	3.00	3.00
L1	mm	43	2.00	2.00
SW	mm	41	0.00	0.00
G	inch	0,5	0.00	0.00
d	mm	42	1.00	1.00
d1	mm	43	1.50	1.50
t	mm	44	1.50	1.50
E	mm	20,96	0.00	0.00
d2	mm	12	2.00	2.00
K	mm	18,63	0.00	0.00