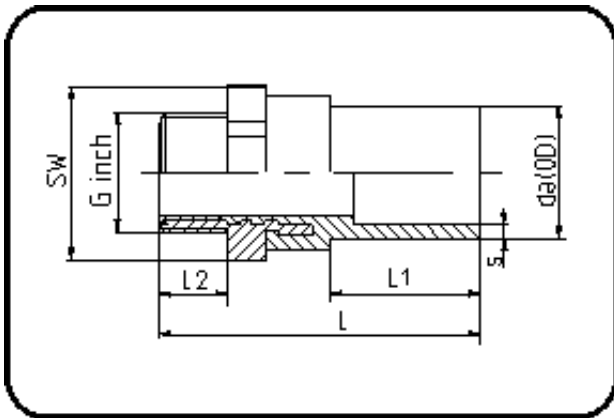


## E-Schweissbare Fittings



Code: 181

- Messing-R-Aussengewinde
- für E-Übergang
- W/P-TW
- formgespritzt
- Heizwendel-Schweissung
- PE 100-RC schwarz

Dimension	Code	Detail	Gewicht
63 X 1 1/4	70.181.4063.11	63X1 1/4" SDR 11 PN16	0.63

	Einheit	Nominale	Tol+	Tol-
da(OD)	mm	63	0.40	0.00
L	mm	117	1.50	1.50
L1	mm	65	1.50	1.50
SW	mm	70	0.00	0.00
G	inch	1,25	0.00	0.00
L2	mm	21	0.75	0.00
s	mm	5,8	0.70	0.00
E	mm	41,91	0.00	0.00
K	mm	38,95	0.00	0.00