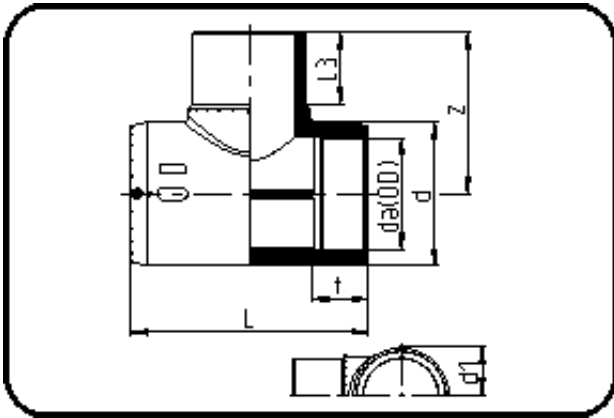


## E-Schweissbare Fittings



Code: 176

- E-T-Stück
- MOP Wasser 16bar / Gas 10bar
- W/P-TW
- formgespritzt
- **Heizwendel-Schweissung**
- PE 100-RC schwarz

Dimension	Code	Detail	Gewicht
40	70.176.0040.11	40 SDR 11	0.20

	Einheit	Nominale	Tol+	Tol-
da(OD)	mm	40	0.00	0.00
L	mm	139	4.50	0.00
L3	mm	50,5	2.25	2.25
d	mm	57,5	0.75	0.75
d1	mm	47,5	1.50	1.50
t	mm	47,5	1.50	1.50
z	mm	86	1.50	1.50